

FREDERICK COUNTY WORKFORCE

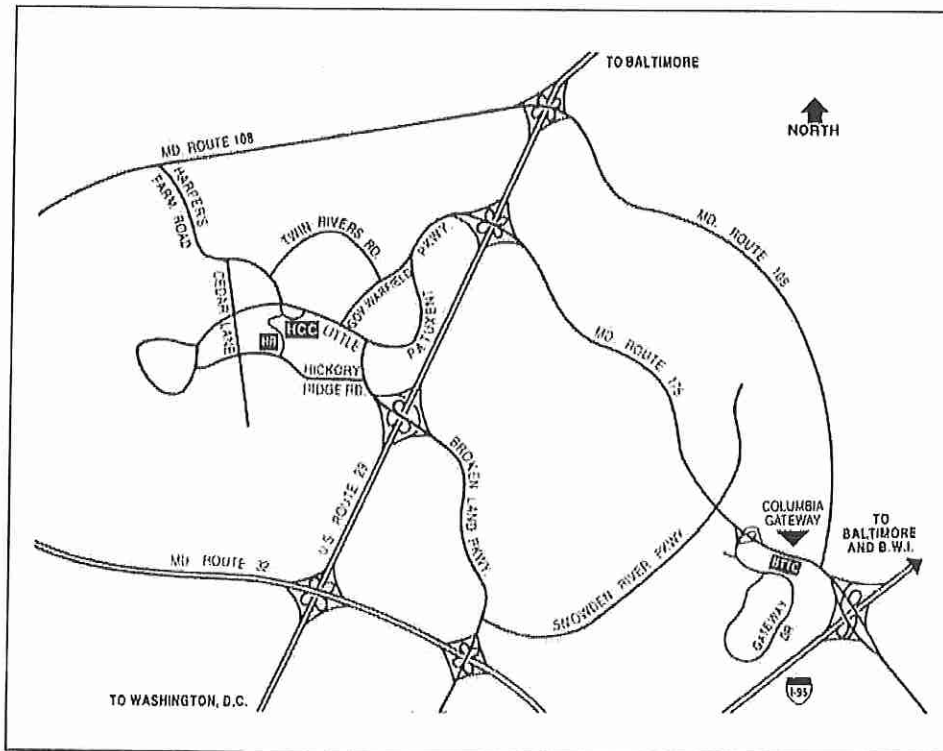
5340 SPECTRUM DRIVE, SUITE A

FREDERICK, MD 21703

## BTC Gateway Campus Map & Directions

6751 Columbia Gateway Drive, Columbia MD 21046  
(443) 518-1660

### Area Map and Directions



From Baltimore: Drive west on U.S. 40 to U.S. Route 29 South. Take the Route 175 East exit and follow Route 175 to the Snowden River/ Col. Gateway Drive exit. Cross over Snowden River at the light and follow Col. Gateway Drive through three traffic lights. The Gateway Building is immediately on the left.

From Baltimore Beltway 695: Take exit 16 West (Interstate 70). Drive 7 miles and exit on U.S. Route 29 South toward Columbia. Take the Route 175 East exit and follow Route 175 to the Snowden River Parkway/Col. Gateway Drive exit. Cross over Snowden at the light and follow Col. Gateway Drive through three traffic lights. The Gateway Building is immediately on the left.

From I-95: Driving north or south on I-95, take the Route 175 West exit toward Columbia (exit 41B). Follow Route 175 about ½ mile to the Col. Gateway Drive exit. Follow Gateway Drive through three traffic lights. The Gateway Building is immediately on the left.

From Annapolis and East: Drive west on Route 50 to I-97 North (Baltimore) to Route 32 West (Columbia). Follow Route 32 to I-95 North (Baltimore). Take the Route 175 West exit toward Columbia (exit 41B). Follow Route 175 about ½ mile to the Col. Gateway Drive exit. Follow Gateway Drive through three traffic lights. The Gateway Building is immediately on the left.

A division of

**HOWARD COMMUNITY COLLEGE**

10650 Hickory Ridge Road • Columbia, MD 21044 • (410) 772-4808 • tdd (410) 772-4822 • <http://btc.howardcc.edu>

## Area Restaurants

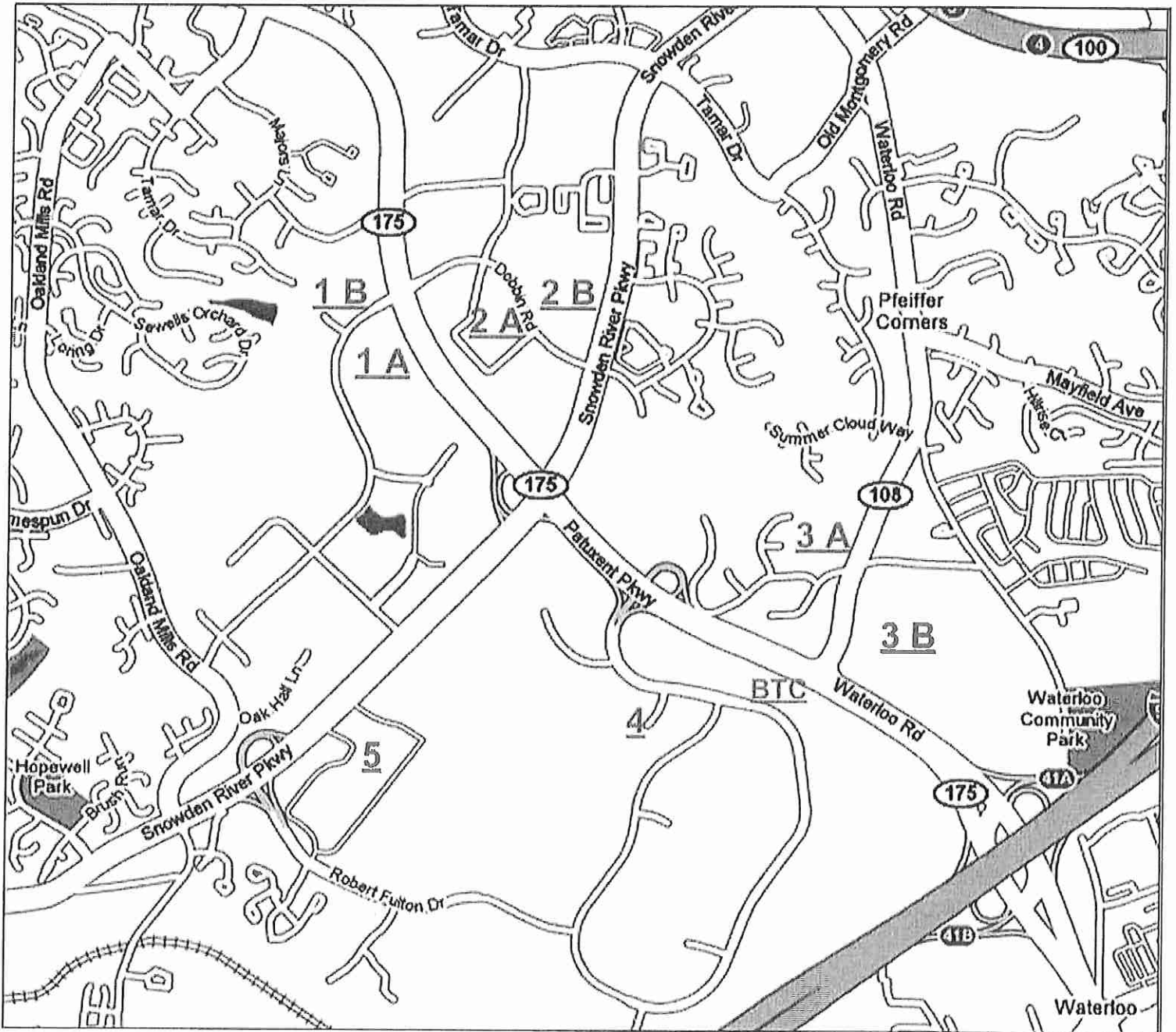
- 1a.** Dobbin Center (turn right out of parking lot and take 175 west toward Columbia. Turn left at Dobbin Road and left at first light)
- |              |                 |               |
|--------------|-----------------|---------------|
| a. Wendys    | b. McDonalds    | c. Chik-fil-a |
| d. Starbucks | e. Panera Bread | f. Baja Fresh |
| g. Garbonzo  | h. Five Guys    |               |
- 1b.** (Turn left at Dobbin Road and right at first light)
- |                |              |          |
|----------------|--------------|----------|
| a. Fuddruckers | b. Ale House | c. QDoba |
| d. Pei Wei     |              |          |
- 2a.** Columbia Crossing (turn right out of parking lot, take 175 west. Stay in exit lane. Turn right on Snowden River and left at first light then left into shopping area).
- |                   |                 |                      |
|-------------------|-----------------|----------------------|
| a. Macaroni Grill | b. La Madeleine | c. Famous Dave's BBQ |
|-------------------|-----------------|----------------------|
- 2b.** Columbia Crossing 2 (same as above except shopping areas are on the right instead of on the left).
- First Area (Western Part)
- |                      |           |                 |
|----------------------|-----------|-----------------|
| a. Chipolte          | b. Cosi's | c. Jimmy John's |
| d. Noodles & Company |           |                 |
- Second Area (Eastern Part)
- |              |              |  |
|--------------|--------------|--|
| a. Red Robin | b. Long Horn |  |
|--------------|--------------|--|
- 3a.** Restaurant Park (turn right out of parking lot and take 175 east. Turn left at first light (Rt. 108). Turn left at next light (Lark Brown)
- |                 |              |              |
|-----------------|--------------|--------------|
| a. McDonalds    | b. Fridays   | c. Applebees |
| d. Olive Garden | e. Bob Evans |              |
- 3b.** Gateway Overlook (Turn right into entrance to shopping center)
- |                  |                |              |
|------------------|----------------|--------------|
| a. Fatburger     | b. Mimi's Café | c. Houlihans |
| d. On the Border |                |              |
- 4.** Gateway Plaza (turn right out of parking lot and make first left and then left into plaza).
- |                        |                     |           |
|------------------------|---------------------|-----------|
| a. KoKo's              | b. Flavors of India | c. Rudy's |
| d. Shanghai Tokyo Café |                     |           |
- 4b.** Next door to our facility is Aida's Bistro
- 5.** Snowden Square (turn right out of parking lot and take 175 west. Turn left on Snowden River Parkway. Turn left at second light into shopping center.)
- |                     |                 |                  |
|---------------------|-----------------|------------------|
| a. Red Lobster      | b. Ruby Tuesday | c. Boston Market |
| d. Bertucci's Pizza |                 |                  |



Continuing on Snowden River Parkway at various shopping center strips on the right you can find ethnic restaurants such as House of India, Azul 17, Pho Dat Thanh, Chutney, Royal Pizza & Subs, and Dominos Pizza.

Farther still on Snowden River turn right on Carved Stone Road and you will see Starbucks and Three Brothers restaurant with Hunan Manor directly behind them.

At the next intersection turn right on Minstrel Way (Exxon on the corner) you can find KFC, Burger King, Pizza Hut, Subway, Taco Bell and Dunkin' Donuts.







Restaurants near the Gateway Business Training Center  
See reverse for legend.

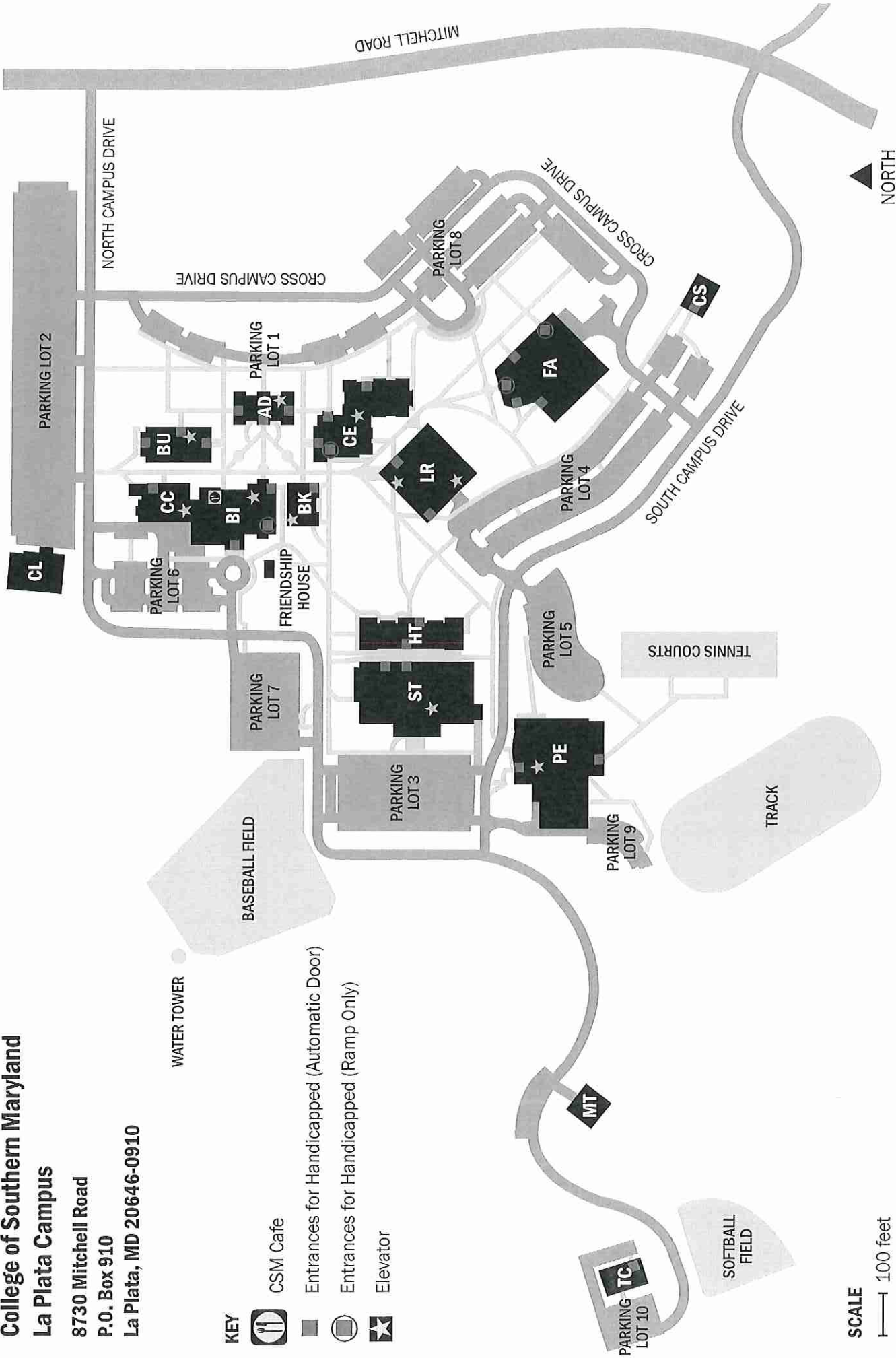
**College of Southern Maryland  
La Plata Campus**

8730 Mitchell Road  
P.O. Box 910  
La Plata, MD 20646-0910

WATER TOWER

**KEY**

-  CSM Cafe
-  Entrances for Handicapped (Automatic Door)
-  Entrances for Handicapped (Ramp Only)
-  Elevator



**SCALE**

1" = 100 feet

**BUILDINGS**

- AD - Administration Building
- BI - Center for Business and Industry
- BK - Bookstore Building
- BU - Business Classroom Building

- CC - Campus Center
- CE - Community Education Building
- CL - St. Charles Children's Learning Center
- CS - Campus Services
- FA - Fine Arts Center

- HT - James C. Mitchell Center for Health Technology
- LR - Learning Resource Center
- MT - Facilities Building
- PE - Physical Education Center

- ST - Francis P. Chiaramonte, MD Center for Science and Technology
- TC - Maryland Center for Environmental Training





## **LA PLATA CAMPUS DIRECTIONS**

College of Southern Maryland  
8730 Mitchell Road, Bldg.BI, Rm. 113E  
La Plata, MD 20646

### **To La Plata Campus, from Baltimore and other locations north**

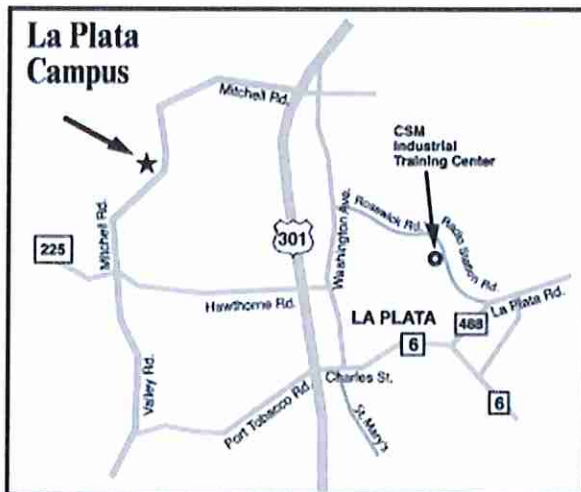
- Take I-95 South towards Washington.
- Continue on I-95 SOUTH/I-495 Capital Beltway.
- From Route I-495 Capital Beltway exit at 7A. This is Route 5, heading south toward Waldorf and Leonardtown.
- Continue on Route 5 to where it meets Route 301.
- Drive south on Route 301 for approximately 12 miles to the traffic light at the intersection of Mitchell Road.
- Turn right on Mitchell Road proceeding approximately two miles, reaching the main entrance to the campus which is on the right. Approximately one-tenth of a mile from the main entrance is the second entrance.

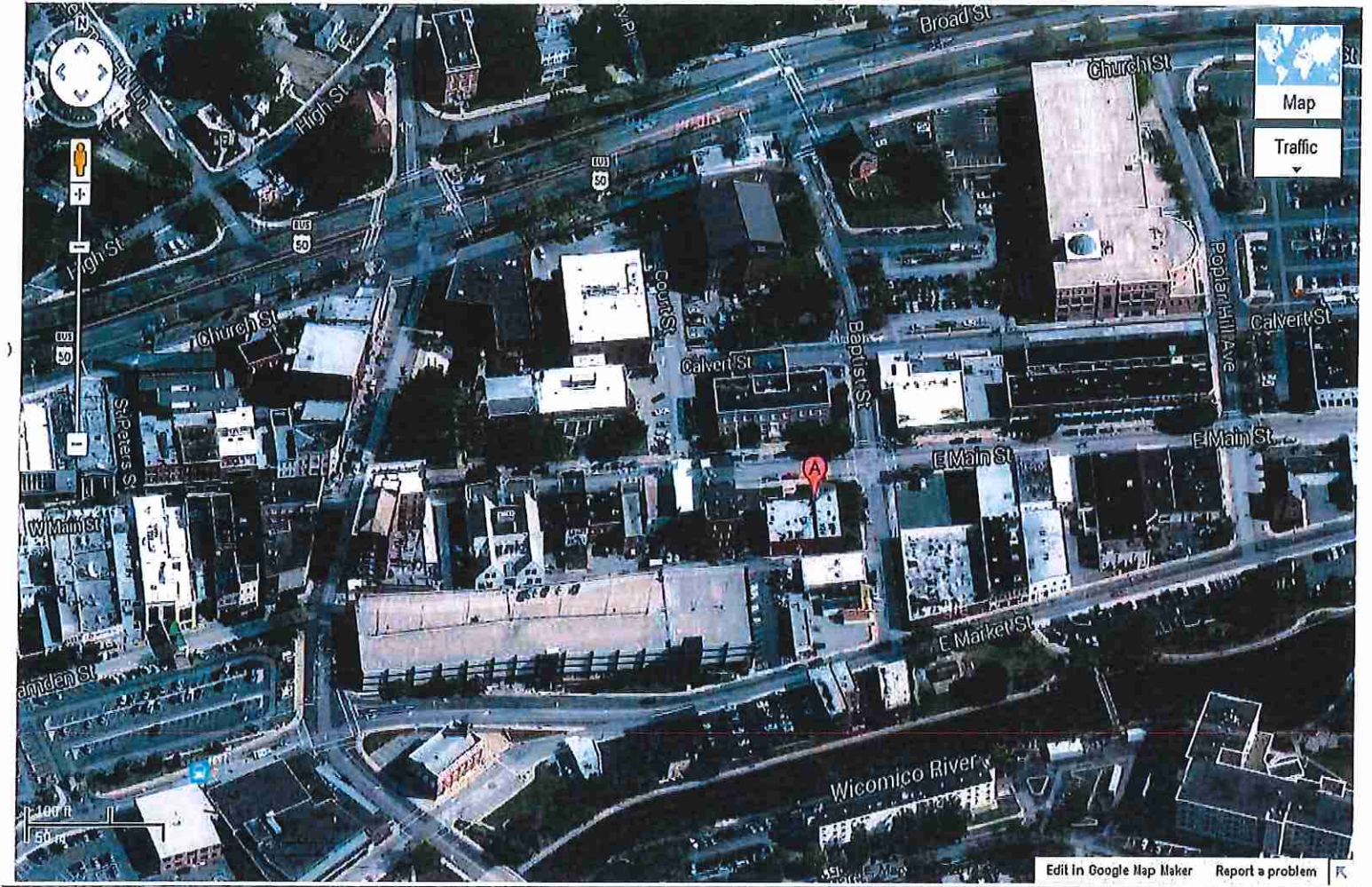
### **To La Plata Campus, from Frederick, MD and other locations west**

- Take I-270 S.
- I-270 S becomes Capital Beltway/I-495 E.
- From Route I-495 E Capital Beltway exit at 7A. This is Route 5, heading south toward Waldorf and Leonardtown.
- Continue on Route 5 to where it meets Route 301.
- Drive south on Route 301 for approximately 12 miles to the traffic light at the intersection of Mitchell Road.
- Turn right on Mitchell Road proceeding approximately two miles, reaching the main entrance to the campus which is on the right. Approximately one-tenth of a mile from the main entrance is the second entrance.

### To La Plata Campus, from Richmond and other locations south

- From Route I-95 N, take exit number 104 toward US-301/Bowling Green/Fort A.P. Hill.
- Continue on US-301 N for approximately 47 miles.
- Turn left onto Mitchell Road proceeding approximately two miles, reaching the main entrance to the campus which is on the right. Approximately one-tenth of a mile from the main entrance is the second entrance.





SALISBURY CHAMBER OF COMMERCE

144 EAST MAIN STREET

SALISBURY, MD